

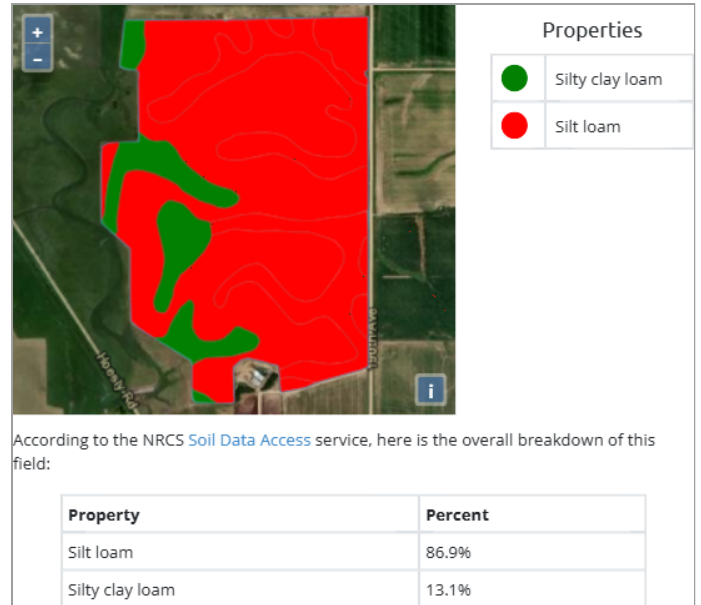
# Product Trial Report

GROWER DETAILS	FIELD DETAILS	PLANTING/HARVEST DETAILS	Total Acre Final Report
<b>Grower:</b>	<b>Total Acres:</b> 187.85	<b>Crop:</b> Corn	<b>Report Date:</b> 12/10/2024
<b>City &amp; State:</b> Creston, NE	<b>Soil Type:</b> Please see Soil Type Map	<b>Plant Date:</b> 05/30/2024	<b>Harvest Year:</b> 2024
<b>Zip Code:</b> 68631	<b>Tile:</b> No Tile	<b>Row Spacing:</b> 30"	<b>Crop:</b> Corn
	<b>Irrigation:</b> Pivot	<b>Planting Depth:</b> 2.50	<b>Trial Name:</b> DgradeR Corn Residue Breakdown
	<b>Fall Tillage:</b> No Till	<b>Harvest Date:</b> 10/22/2024	<b>Trial Type:</b> Post 2023 Corn Harvest
	<b>Spring Tillage:</b> Vertical/Min Till	<b>Hybrid:</b> BR549	
	<b>Previous Crop:</b> Corn	<b>Seed Company:</b> Brevant Seeds	
		<b>Population:</b> 33800	

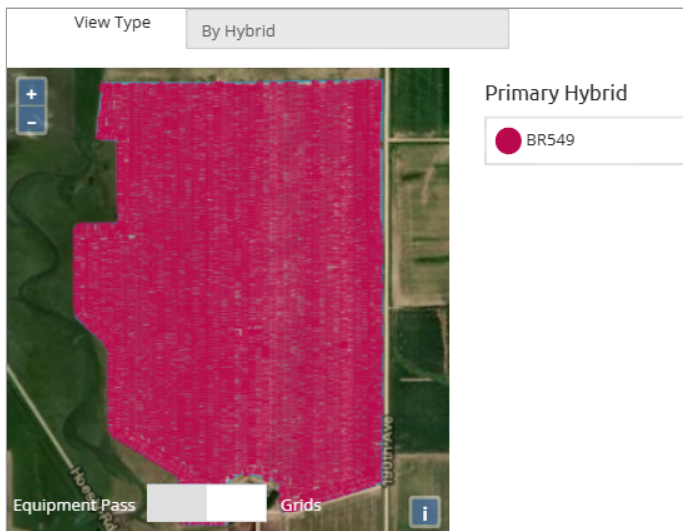
## Field Map



## Soil Type



## Planting Map



## Trial Zones



# Product Trial Report

## Yield Results Data

### High Level Yield Heat Map



This data was filtered based on  $-1 / +2.5$  St Dev

Yield Summary BPA	
Location	Yield
Trial	368.71
Control	350.06
<b>Yield Response</b>	<b>18.65</b>

Yield Values	
●	261.9 - 320.8
●	320.8 - 345.4
●	345.4 - 365
●	365 - 394.3
●	394.3 - 501.5

# Product Trial Report

**Product Trial Comments:**

This trial had a +18.65 bushel/acre yield response using the -1/+2.5 Standard Deviation measurement method to tighten up yield data points.

**Application Date and Details:**

**2023 Crop:** Corn

**Application Date:** 11/10/24

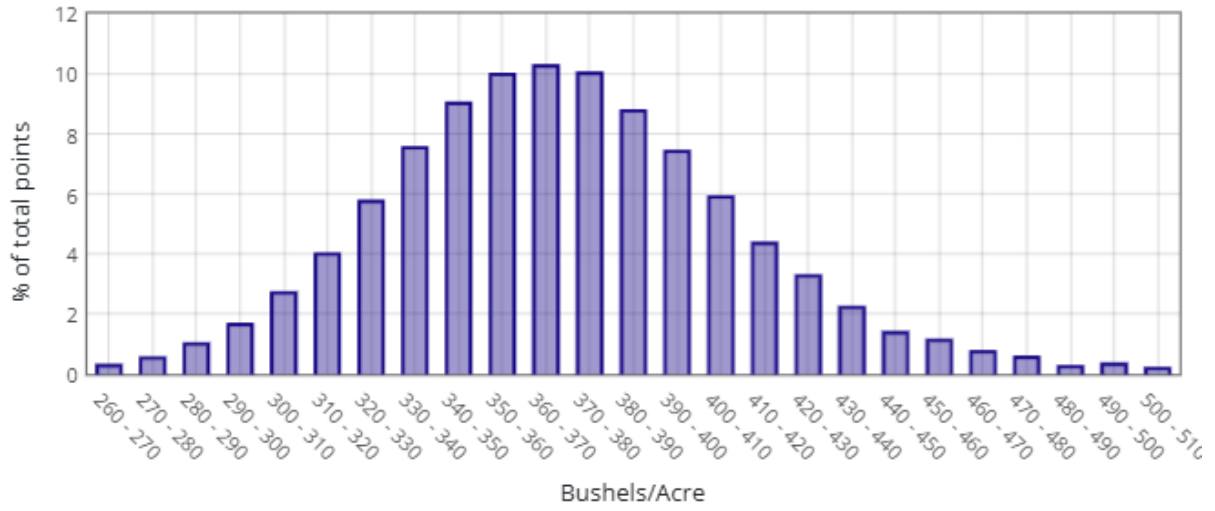
**Application Method:** Sprayer Broadcast

**Product Application Rate/Acre:** DgradeR = 48 oz., Dry Spray Grade AMS = 2 lbs.

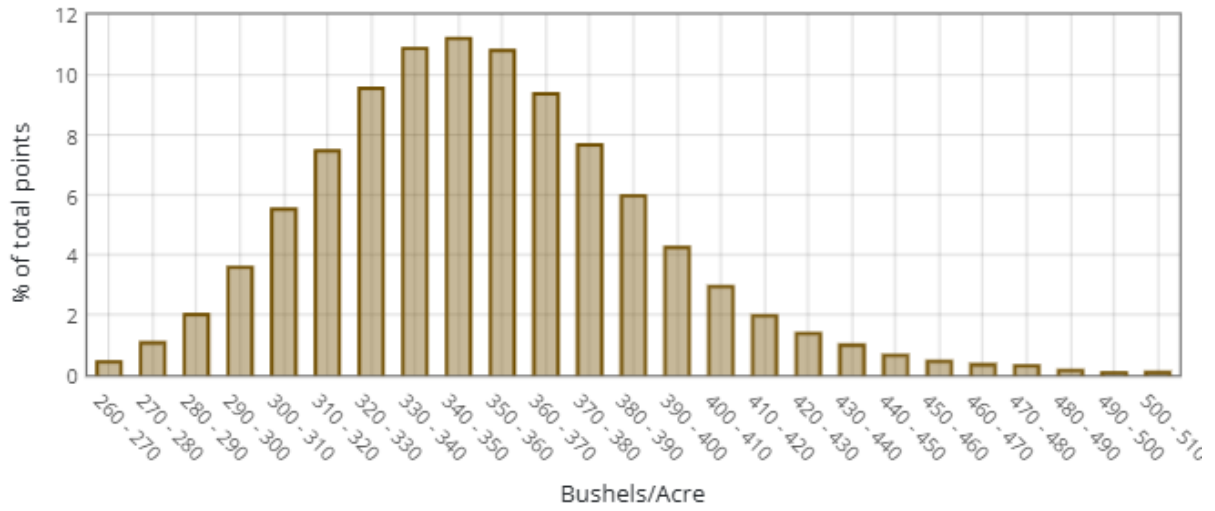
**Tank Mix Rate/Acre:** 8 gallons

# Product Trial Report

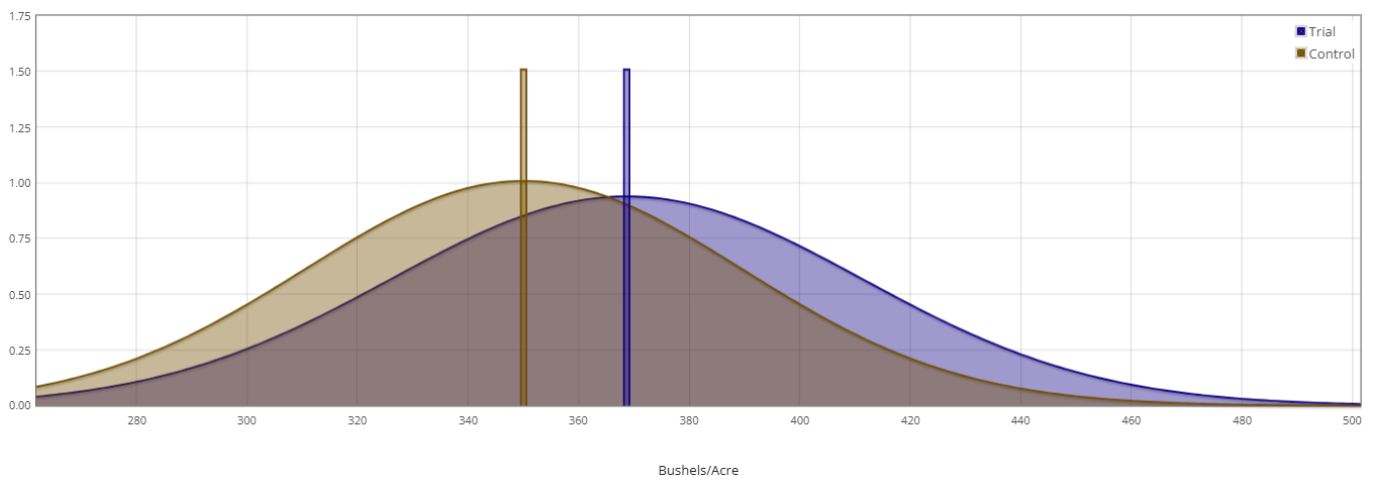
## Trial



## Control



## Normal Curve Distribution



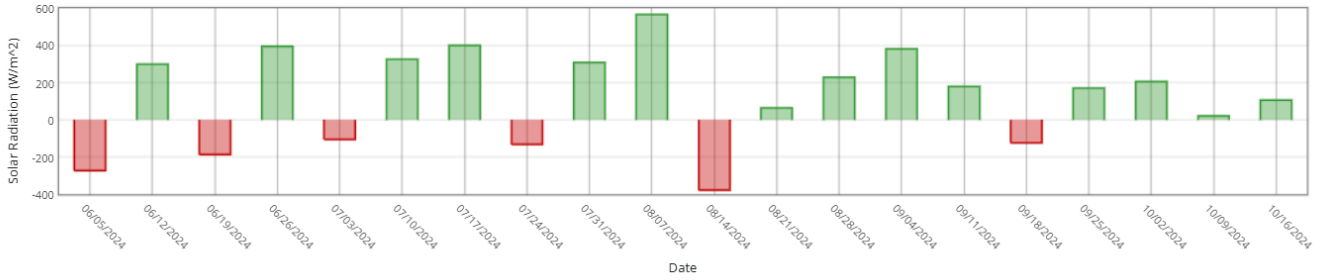
# Product Trial Report

## Trial Location Weather Data vs 5 Yr Avg

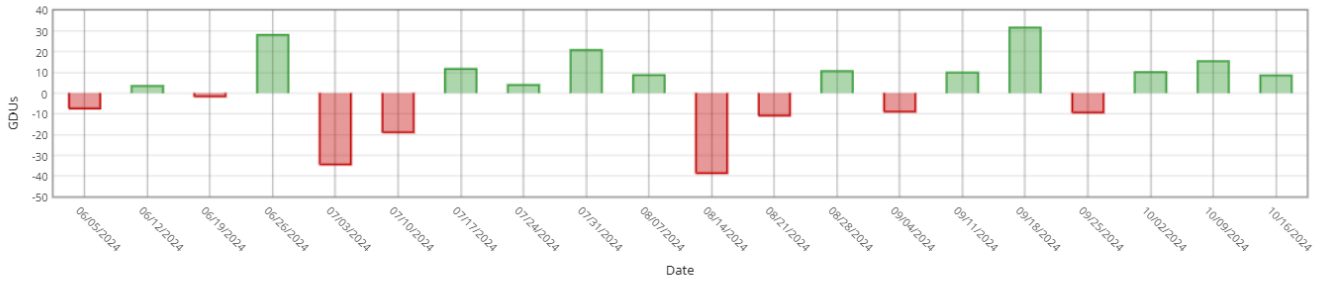
Historical Averages based on past  years

Cumulative  Week over Week

### Sunlight



### Heat (GDUs)



### Rain

